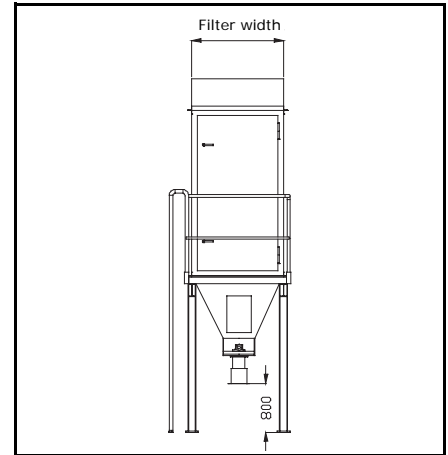
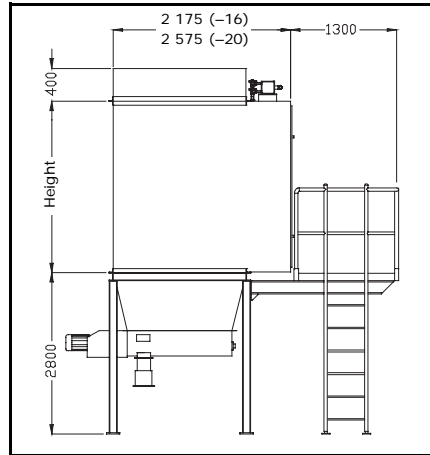
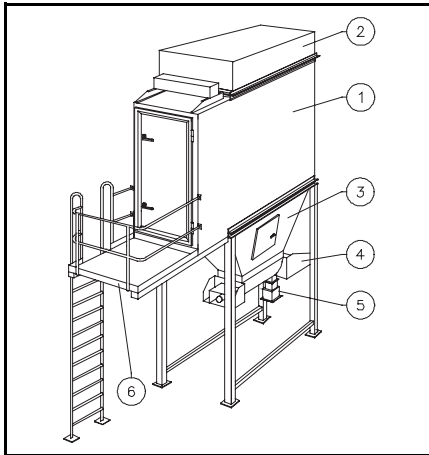




## NFCT Surface filter with compressed air cleaning



The NEOTECHNIK surface filter NFCT operates fully automatically with a compressed air cleaning system. This custom-made filter allows economic operation with a

constantly low filter differential pressure. Compared to the reverse air filter NFS and to the compressed air filter NFD, the capital expenditure is considerably lower. The

control of the cleaning impulses is carried out electro-pneumatically. Impulse and interval times can be regulated.

Type	Filter bags quantity	Filter surface m <sup>2</sup>	Filter width mm	Height mm
NFCT 101 / 12 - 16	12	14	917	500
NFCT 101 / 12 - 20	12	18	917	500
NFCT 110 / 18 - 16	18	22	1 260	500
NFCT 110 / 18 - 20	18	27	1 260	500
NFCT 201 / 24 - 16	24	29	917	900
NFCT 201 / 24 - 20	24	36	917	900
NFCT 301 / 36 - 16	36	43	917	1 300
NFCT 301 / 36 - 20	36	54	917	1 300
NFCT 210 / 36 - 16	36	43	1 260	900
NFCT 210 / 36 - 20	36	54	1 260	900
NFCT 401 / 48 - 16	48	58	917	1 700
NFCT 401 / 48 - 20	48	72	917	1 700
NFCT 310 / 54 - 16	54	65	1 260	1 300
NFCT 310 / 54 - 20	54	81	1 260	1 300
NFCT 501 / 60 - 16	60	72	917	2 100
NFCT 501 / 60 - 20	60	90	917	2 100
NFCT 410 / 72 - 16	72	86	1 260	1 700
NFCT 410 / 72 - 20	72	108	1 260	1 700
NFCT 302 / 72 - 16	72	86	1 660	1 300
NFCT 302 / 72 - 20	72	108	1 660	1 300
NFCT 510 / 90 - 16	90	108	1 260	2 100
NFCT 510 / 90 - 20	90	135	1 260	2 100
NFCT 311 / 90 - 16	90	108	2 000	1 300
NFCT 311 / 90 - 20	90	135	2 000	1 300
NFCT 402 / 96 - 16	96	115	1 660	1 700
NFCT 402 / 96 - 20	96	144	1 660	1 700
NFCT 502 / 120 - 16	120	144	1 660	2 100
NFCT 502 / 120 - 20	120	180	1 660	2 100
NFCT 411 / 120 - 16	120	144	2 000	1 700
NFCT 411 / 120 - 20	120	180	2 000	1 700
NFCT 511 / 150 - 16	150	180	2 000	2 100
NFCT 511 / 150 - 20	150	225	2 000	2 100

### Construction

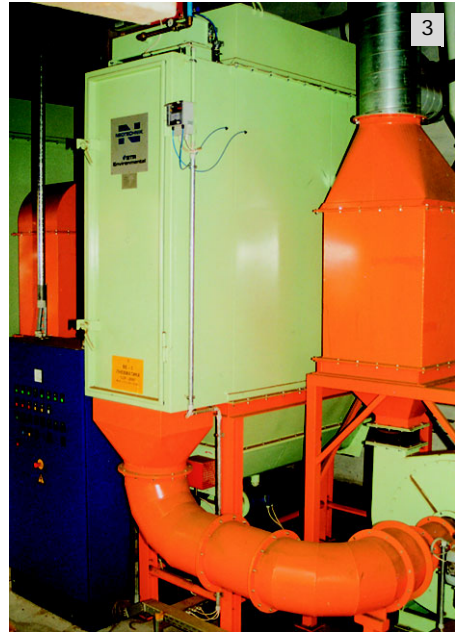
The filter housing is constructed of reinforced welded steel sheet. Airtight doors allow access to the clean gas chamber. The filter element consists of individual filter bags and inserts with spanners. The filter elements, stretched via locking fastener, are easy to maintain and can be removed from the front.

In particular the cleaning device consists of:

- ▶ Easy to dismantle nozzle pipes
- ▶ Membrane valves
- ▶ Valve control units
- ▶ compressed air manifold

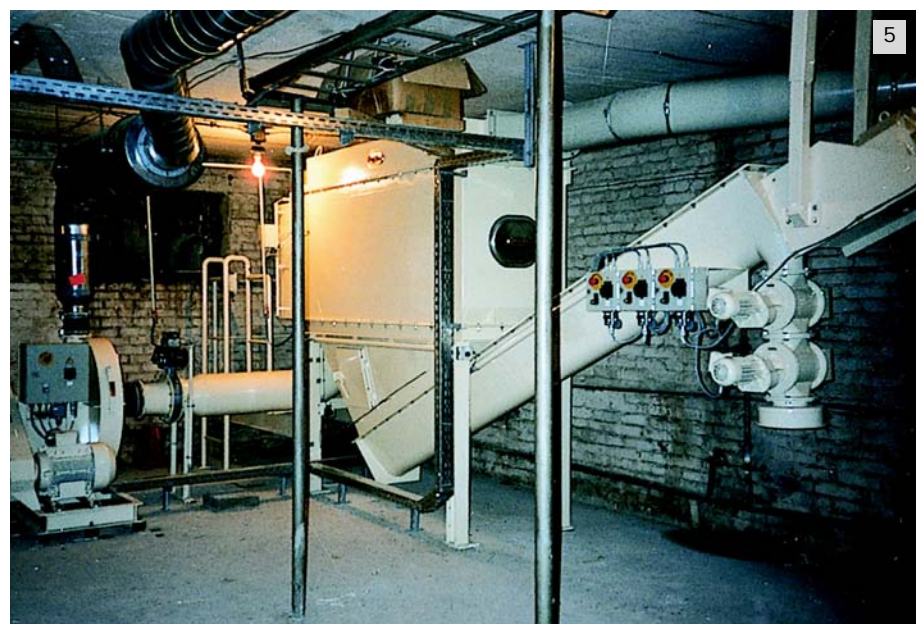
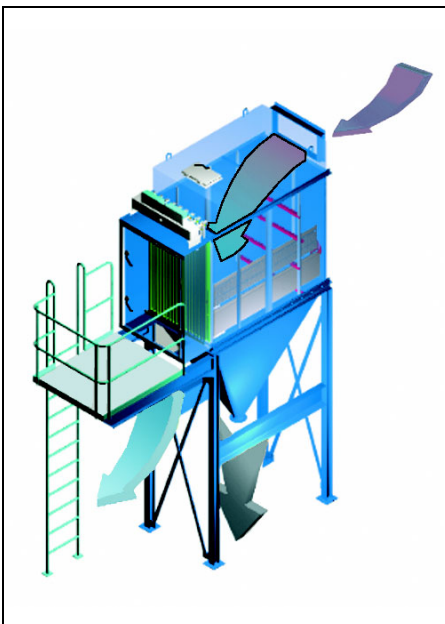
The filter unit is composed of the following premounted elements:

- 1 Filter housing
- 2 Crude gas hood
- 3 Dust collection hopper
- 4 Screw conveyor
- 5 Dust valve
- 6 Platform with access ladder



Examples of dust extraction:

- 1 Tobacco feeding
- 2 Rubber processing
- 3 Tobacco processing
- 4 Machine room
- 5 Food production



## NEOTECHNIK GmbH Entstaubungsanlagen

Piderits Bleiche 8 · D-33689 Bielefeld · Postfach 11 02 61 · D-33662 Bielefeld  
 Tel.: +49 (0) 52 05 75 03-0 Fax.: +49 (0) 52 05 75 03-77  
 Internet: www.neotechnik.com E-Mail: info@neotechnik.com