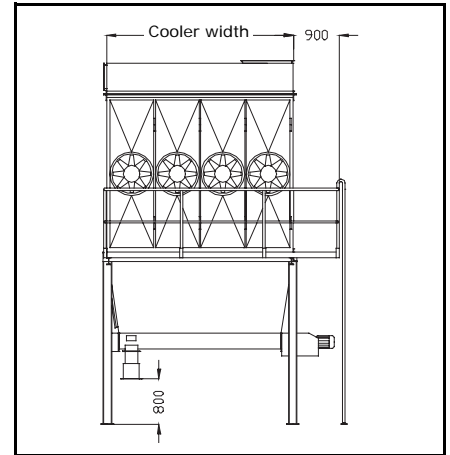
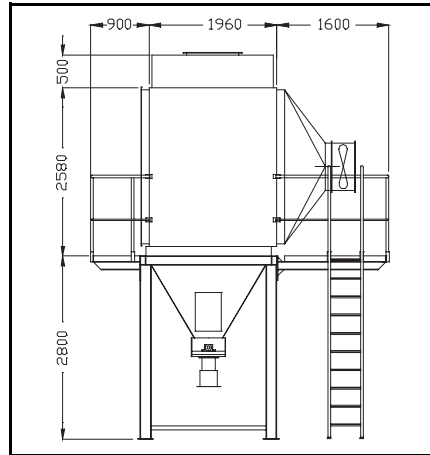
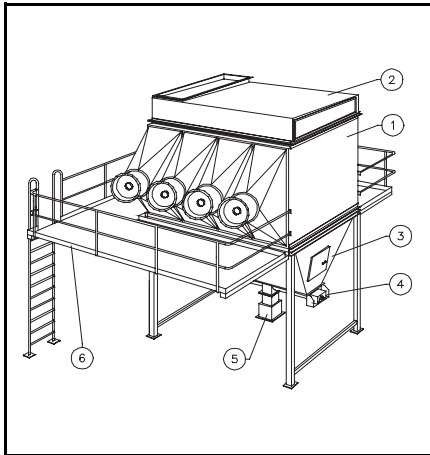




NFK Surface cooler

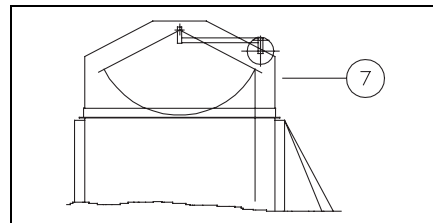


The NEOTECHNIK NFK surface cooler is designed to cool hot and dusty exhaust gases (approx. 550 °C) from melting furnaces, as e.g. cupolas, rotary furnaces, shaft furnaces etc.

The hot gases are fed to the cooler from above. On the outer surfaces of the built-in sheet steel horizontal bags the heat is transmitted to the cool air, which is transmitted by axial flow fans through the cooling elements, as required.

In addition to its function to lower the temperature the surface cooler also serves as preliminary separator

of coarse dust particles from hot waste gases. The separated dust is emitted from the dust collection hopper by a screw conveyor and double pendulum flap. If necessary, the cooler is fitted with a fully automatic cooling surface cleaning system which continuously removes any possible dust deposits.



Construction

The cooler housing is constructed of reinforced welded steel sheet. The cooling fans are fixed to swinging doors allowing an easy inspection of the cooling elements.

The cooling unit consists of individual cooling elements made of steel sheet. The cooler elements, sealed with locking fasteners, are easy to maintain and can be removed from the front.

The fully automatic cleaning device which has to be provided, if necessary, consists of a series of steel chains which are fixed to a swinging arm. The motion of these chains releases any dust particles from the outer surface of the cooling elements.

The cooling unit is composed of the following premounted elements:

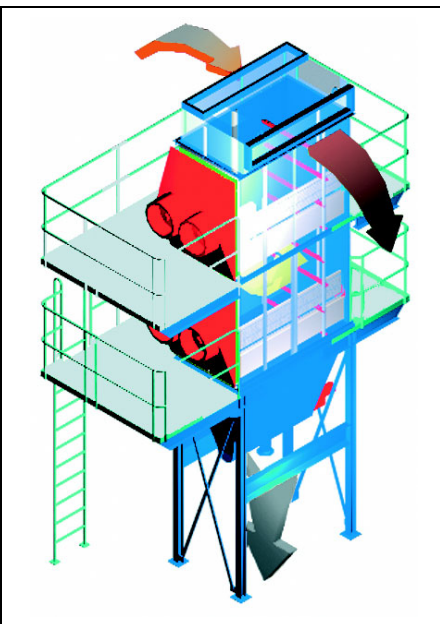
- 1 Cooler housing
- 2 Crude gas hood
- 3 Dust collection hopper
- 4 Screw conveyor
- 5 Dust valve
- 6 Platform with access ladder
- 7 Cooler cleaning

Type	Cooling bags quantity	Cooling surface m ²	Cooler width mm	Cooling air ventilators	Weight kg
NFK 601 / 72-01	72	108	925	1	2 950
NFK 602 / 144-02	144	216	1 666	2	4 950
NFK 603 / 216-03	216	324	2 407	3	6 800
NFK 604 / 288-04	288	432	3 148	4	8 750
NFK 605 / 380-05	360	540	3 889	5	10 950
NFK 606 / 432-06	432	648	4 630	6	13 000
NFK 607 / 504-07	504	756	5 371	7	15 100
NFK 608 / 576-08	576	864	6 112	8	17 150
NFK 609 / 648-09	648	972	6 853	9	19 450
NFK 610 / 720-10	720	1 080	7 594	10	21 350
NFK 611 / 792-11	792	1 188	8 335	11	23 450
NFK 612 / 864-12	864	1 296	9 076	12	25 250
NFK 613 / 936-13	936	1 404	9 817	13	27 350
NFK 614 / 1 008-14	1 008	1 512	10 558	14	29 450
NFK 615 / 1 080-15	1 080	1 620	11 299	15	31 550
NFK 616 / 1 152-16	1 152	1 728	12 040	16	33 600



Examples of dust extraction:

- 1 Cold wind cupola furnaces
- 2 Melting furnace
- 3 Hot wind cupola furnaces
- 4 Cold wind cupola furnaces



NEOTECHNIK GmbH Entstaubungsanlagen

Piderits Bleiche 8 · D-33689 Bielefeld · Postfach 11 02 61 · D-33662 Bielefeld
 Tel.: +49 (0) 52 05 75 03-0 Fax.: +49 (0) 52 05 75 03-77
 Internet: www.neotechnik.com E-Mail: info@neotechnik.com